

Former Hagi Domain School Meirinkan Guide Map

Hagi Meirin Gakusha is located on the site where Hagi Domain School Meirinkan previously stood. There are various sites of interest nearby, including Yūbikan Hall, used for spear and sword practice, and Suiren Pool, which was used for swimming and horseback riding in water.

Former Hagi Domain School Meirinkan

Hagi Domain School Meirinkan was built in 1718 by the 5th Domain Lord, Mōri Yoshimoto, for the education of the sons of domain retainers. Originally constructed within the outer moat of Hagi Castle, the school was moved to its present location in Emukai approximately 130 years ago, in 1849, and expanded. The 50,000m² site included martial arts training areas, and a space for military drills, Yoshida Shōin and Katori Motohiko (Odamura Inosuke) taught here.



Suiren Pool (National Historic Site)
Swimming practice and horseback drills in water took place here in the Edo period. This site is unique in Japan.

Stone in memory of the special work of the teacher Murata Seifū



It is not possible to enter Buildings No. 3 & 4



Yūbikan Hall (National Historic Site)
Yūbikan Hall was used for military training with spears and swords. Not only those from Hagi Domain, but students from other domains practiced here at tournaments. It is thought that Sakamoto Ryōma also participated in a tournament here.

Ask the guide inside Yūbikan Hall to tell you about the building (free)

Hagi Agricultural Cooperative

Kantoku Gate

Meirinkan commemorative stones

Visitors can enter and exit here on foot or by bicycle

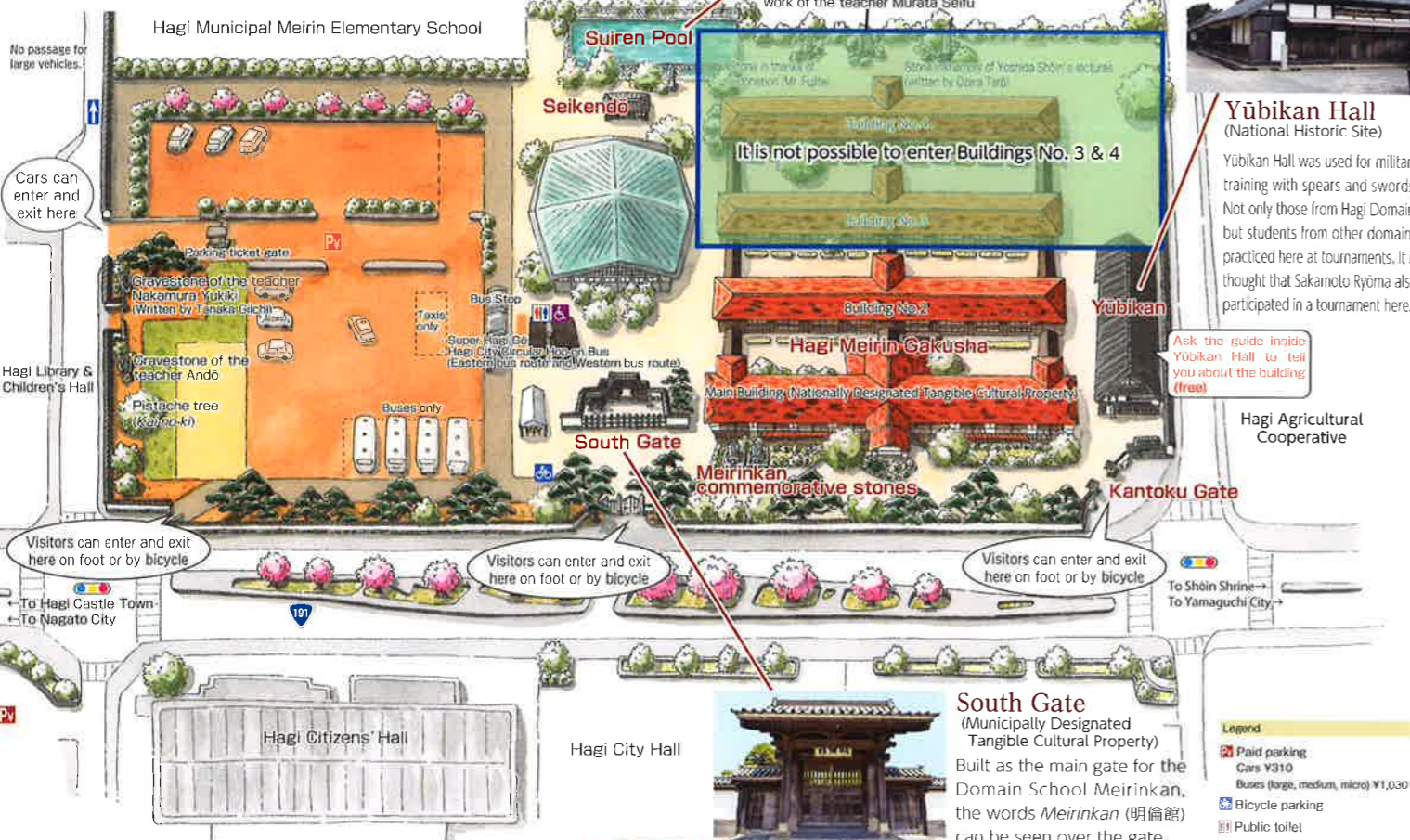
Visitors can enter and exit here on foot or by bicycle

Visitors can enter and exit here on foot or by bicycle



South Gate (Municipally Designated Tangible Cultural Property)
Built as the main gate for the Domain School Meirinkan, the words *Meirinkan* (明倫館) can be seen over the gate.

- Legend**
- Paid parking: Cars ¥310, Buses (large, medium, micro) ¥1,030
 - Bicycle parking
 - Public toilet
 - Accessible toilet



Hagi Meirin Gakusha Visitor Center Access Map

〒758-0041 Hagi Shiyakusho-mae, Emukai 602, Hagi City, Yamaguchi Pref.



Transport Access

- By Plane**
- Hagi Iwami Airport
 - Door-to-door Noriai Taxi (70mins) (By reservation up to 1 day in advance)
 - Yamaguchi Ube Airport
 - Bus to Shin-Yamaguchi Station (35mins), bus from Shin-Yamaguchi to Yamaguchi Ube Airport (70-95mins)
 - Door-to-door Noriai Taxi (70mins) (By reservation up to 1 day in advance)
 - Fukuoka Airport
 - Door-to-door Noriai Taxi (2h40mins) (By reservation up to 1 day in advance)
 - Contact (Noriai Taxi) Hagi Kintetsu Taxi Tel: (0838) 22-0924

- By Shinkansen**
- From JR Shin-Yamaguchi Station
- Super Hagi Gō (direct bus to Hagi Meirin Gakusha) Shin-Yamaguchi Station - Hagi Meirin Gakusha (60mins)
 - Bōchō Bus (70mins) Shin-Yamaguchi Station - Mine City - Hagi Bus Center
 - Chūgoku JR Bus (110mins) Shin-Yamaguchi Station - Yamaguchi City - Hagi Meirin Center
 - Contact Bōchō Bus Ltd. Bus Center Information Center Tel: (0838) 22-3816 Chūgoku JR Bus Ltd. Yamaguchi branch Tel: (083) 922-2519

- By car**
- Take the Chūgoku Expressway via Mine-Higashi JCT, "Ogiri Hagi Road" (toll free). Hagi is 20mins from Edo I.C.
- By Highway Bus**
- Tokyo - Hagi (Hagi Express) Tokyo (Tokyo Station Yaesu South exit) 19:30 - Hagi (Hagi Bus Center) 10:04 Tokyo (Tokyo Station Nihonbashi exit) 8:24 - Hagi (Hagi Bus Center) 17:45
 - Tokyo/Osaka/Kobe - Hagi (Karst Gō) Osaka (Abeno Bus Station) 22:30 - Hagi (Hagi Bus Center) 10:10 Osaka (Abeno Bus Station) 7:05 - Hagi (Hagi Bus Center) 19:30
 - Contact Bōchō Bus Ltd. Bus Center Information Center Tel: (0838) 22-3816

- Contact Hagi Tourism Centers**
- Hagi City Tourism Division Tel: (0838) 25-3139 (weekdays only)
 - Hagi City Tourism Association Tel: (0838) 25-1750
 - NPO Hagi Guide Association Tel: (0838) 25-3527
 - Hagi Onsen and Ryokan Cooperative Association Tel: (0838) 22-7599



Hagi Meirin Gakusha Visitor Center

Main Building and Building No. 2

The story starts here.



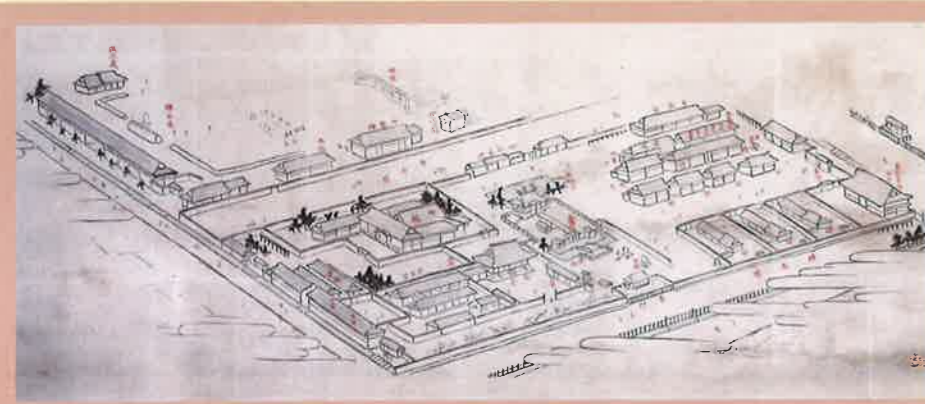
Formerly the Main Building of Meirin Elementary School (Former Hagi Domain School Meirinkan)



Situated on the site of the Former Domain School Meirinkan, the largest wooden schoolhouse in Japan is Hagi's new tourism hub!



Hagi Domain School Meirinkan is an outstanding example of Japanese architecture. The schoolhouse of Meirin Elementary School was built on this site, and the building has been reopened as Hagi Meirin Gakusha (a 150th Anniversary of the Meiji Restoration project). This precious site and the largest wooden schoolhouse in Japan which was subsequently built here, have a fascinating story to tell.



Plan of the Former Hagi Domain School Meirinkan (Hagi Museum Collection)



Hagi Domain School Meirinkan Exhibition Room
Hagi Meirin Gakusha is the largest wooden schoolhouse in Japan. The significance of this is explained in an easy-to-understand way through a comparison with other domain schools around Japan.

Meirin Elementary School Exhibition Room

Built on the site of the Domain School, learn about the history of the well-attended Meirin Elementary School, from its construction to the present day.



Ceiling Cavity Observation Room

See the special architectural structure of the Main Building, nationally registered as Important Cultural Property.



Restored Multipurpose Classroom

A charming restored classroom, used for events held in the wooden schoolhouse.

Main Building (free entry)

Your Hagi visit starts here!
Visit the Tourist Information Center and discover 300 years of history in Hagi from the times of Hagi Domain School Meirinkan, to the former Meirin Elementary School.



Tourist Information Center

The starting point for sightseeing, with lots to excite your interest in the history, culture and nature around Hagi. Pick up all the information you need to start exploring the city, here. Information about Hagi Meirin Gakusha is also available.

Geopark Visitor Center

Learn about the volcanic birth of the Hagi landmass 100 million years ago. Starting point to explore Hagi Geopark.



Restored Classrooms

Restored elementary school classrooms, used as the set for the special NHK drama "Hajimari no Uta," about a national school musical contest.

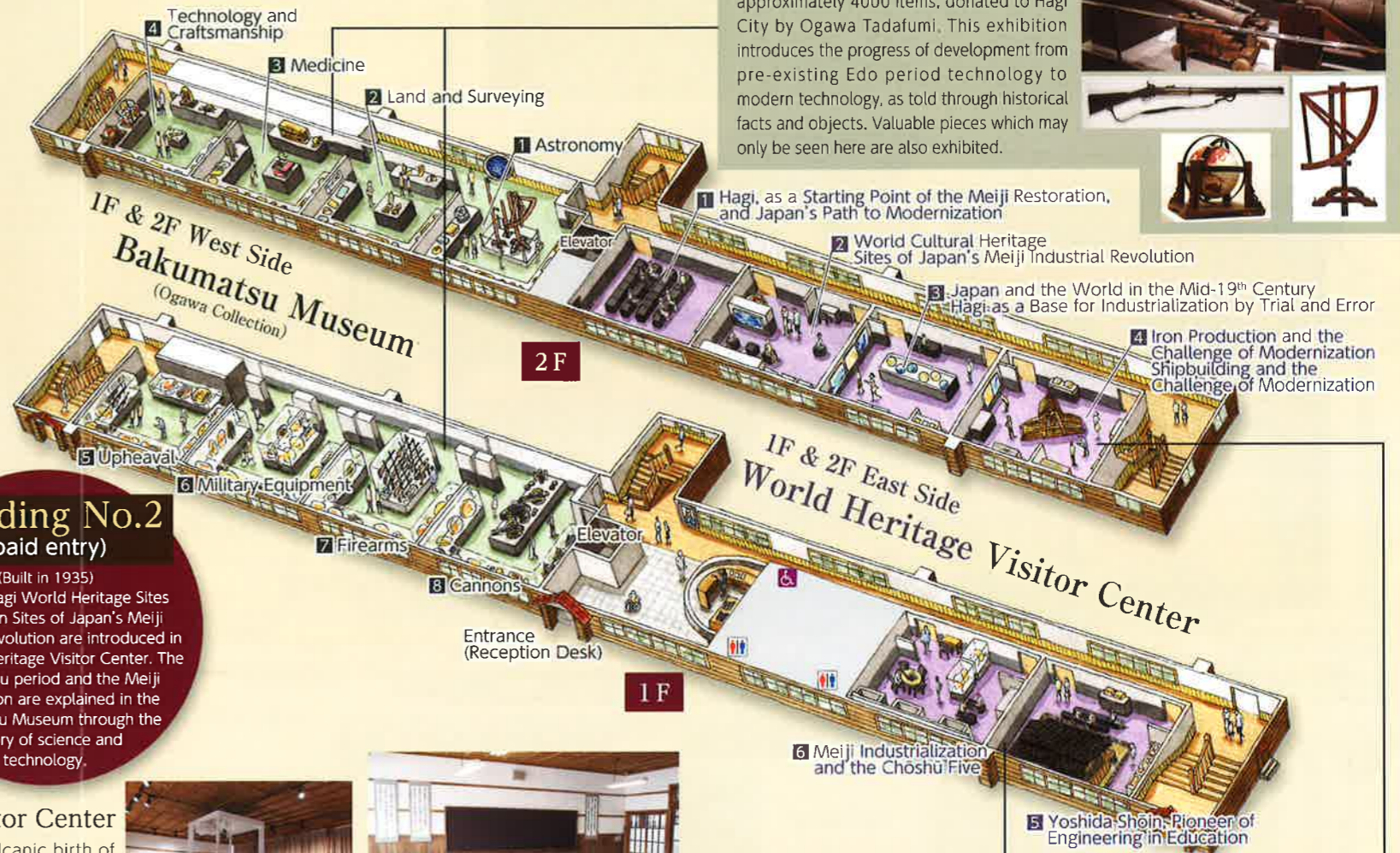


Café-Restaurant, "Hagi Goyomi" & Gift Shop

A treasure trove of the finest Hagi ingredients. Hagi Goyomi serves fresh Hagi brand fish, caught in the Sea of Japan, and typical Hagi cuisine, with the focus on locally produced, seasonal vegetables. Menu supervised by the ambassadors of Hagi's local foods, the chefs Kumagai Kihachi and Okuda Masayuki. Especially for the visitors to our city, the Gift Shop offers a variety of items available only in Hagi.

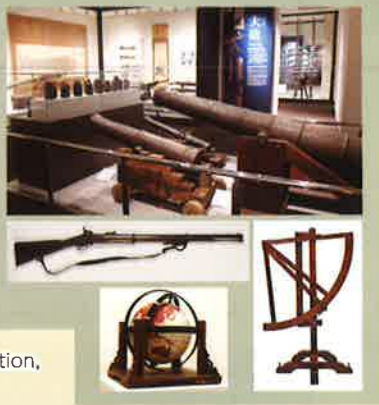
Building No.2 (paid entry)

(Built in 1935)
The five Hagi World Heritage Sites included in Sites of Japan's Meiji Industrial Revolution are introduced in the World Heritage Visitor Center. The Bakumatsu period and the Meiji Restoration are explained in the Bakumatsu Museum through the history of science and technology.



Bakumatsu Museum (Ogawa Collection)

In the Bakumatsu Museum, some 600 pieces relating to Edo period science (astronomy, land and surveying, medicine, armaments) are exhibited. The complete collection comprises approximately 4000 items, donated to Hagi City by Ogawa Tadafumi. This exhibition introduces the progress of development from pre-existing Edo period technology to modern technology, as told through historical facts and objects. Valuable pieces which may only be seen here are also exhibited.



World Heritage Visitor Center

Learn about the role of the five World Heritage Sites in Hagi. Of the sites registered as World Heritage under Sites of Japan's Meiji Industrial Revolution, it was from the Hagi sites that Japan's modernization began. The role of Yoshida Shōin in regards to engineering education in Japan is also explained in an understandable, enjoyable way through video, panels, animations and more.



Set used as Yoshida Shōin's Classroom | Try pumping Ohitayama Tataru Iron Works bellows | Learn about the story of the Kōbu Daigakkō (now, the Faculty of Engineering, the University of Tokyo) (Hagi Museum Collection)

Hagi Meirin Gakusha Visitor Center
Emukai, 602 Ban-cho

Opening Hours
9:00 - 17:00
Hagi Goyomi:
• Restaurant: 11:00 - 15:00
2:18:00 - 21:00
(By reservation only)
• Cafe: 11:00 - 15:00

Admissions
Main Building: Free
Building No.2: Adults, ¥300;
Children 15-18, ¥200; children 6-14, ¥100
(20% discount for groups)

Parking
Cars (up to 180): ¥310 per car
Large buses (up to 10): ¥1,030 per bus

Contact
Hagi Meirin Gakusha
Tel: (0838) 21-0304

※All photos and images are for illustrative purposes only.